

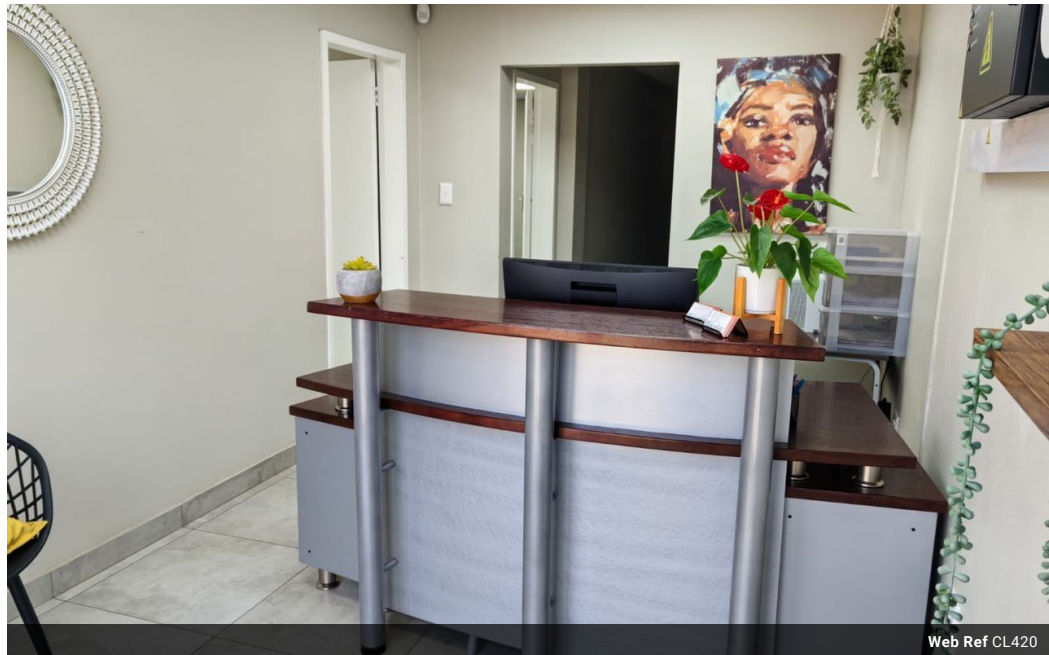


Cecilia Roux
076 954 2036
ceciliaroux01@gmail.com

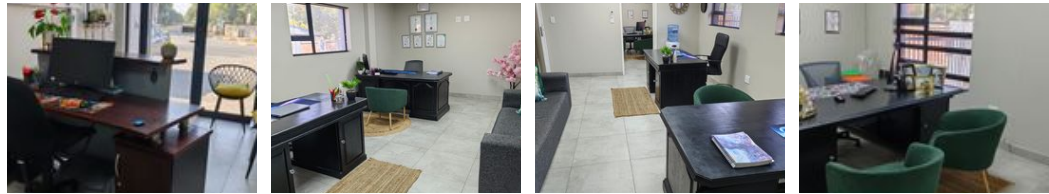
Contact Klerksdorp - Botha &
Botha Attorneys Inc.

018 4682707

59 Monica Avenue
Flamwood
Klerksdorp
2571



Web Ref CL420



R116 per m²

Gross Monthly Rental R10,000 Excl. VAT

0 2

Office to rent in Flamwood

Modern Office Space with Boardroom and Parking

Discover a professional and convenient office space perfect for businesses seeking a functional and client-friendly environment. Located in a prime area, this office space is designed to accommodate both your team and visiting clients with ease.

Key Features:

Water is included in the rental amount. Prepaid electricity.

Spacious Office Area: The office space provides a well-lit, open-plan layout that can easily be customized to suit your team's needs, promoting productivity and collaboration.

Private Boardroom: Included is a dedicated boardroom, ideal for meetings, presentations, or conferences, offering privacy and a professional setting for important discussions.

Features

Zoning Commercial

Exterior
Open Parking Bays 2

Sizes
Floor Size 86m²