



Jenny Geldenhuys
060 408 5560
jengelhuys@gmail.com

Contact Klerksdorp - Botha &
Botha Attorneys Inc.

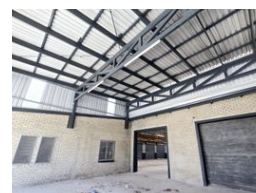
018 4682707

59 Monica Avenue
Flamwood
Klerksdorp
2571

983m² Warehouse For Sale in George Industrial



Web Ref CL424



R8,500,000

Monthly Levy R3,900 Excl. VAT

Monthly Rates R2,500 Excl. VAT



983sq m Industrial Property in George Industrial

Perfectly situated in the heart of George's thriving industrial business area, this prime commercial property presents an outstanding opportunity for businesses in distribution and heavy industry. Priced at R8,895,000 (excluding VAT), the property offers a clean, spacious warehouse and dedicated office facilities. The open warehouse layout spans 737 square meters, while the 183-square-meter office area is well-lit, including four bathrooms and a kitchen. This 920-square-meter property provides ample parking and is zoned for general industrial use, making it highly versatile.

Designed to support intensive industrial needs, the property includes three-phase electricity, secure all-around fencing, gated

Features

Zoning Industrial

Sizes

Floor Size 983m²
Land Size 2,000m²