



Ayesha Kondkery
(Property Practitioner)
083 212 9502
ayesha@threepercent.com



Christine Van Dyk
083 230 5777

christine@cvd-attorneys.com

Contact Jhb - Benoni

083 2305777

14 Polka Corner
Sunward Park
1459

On Show

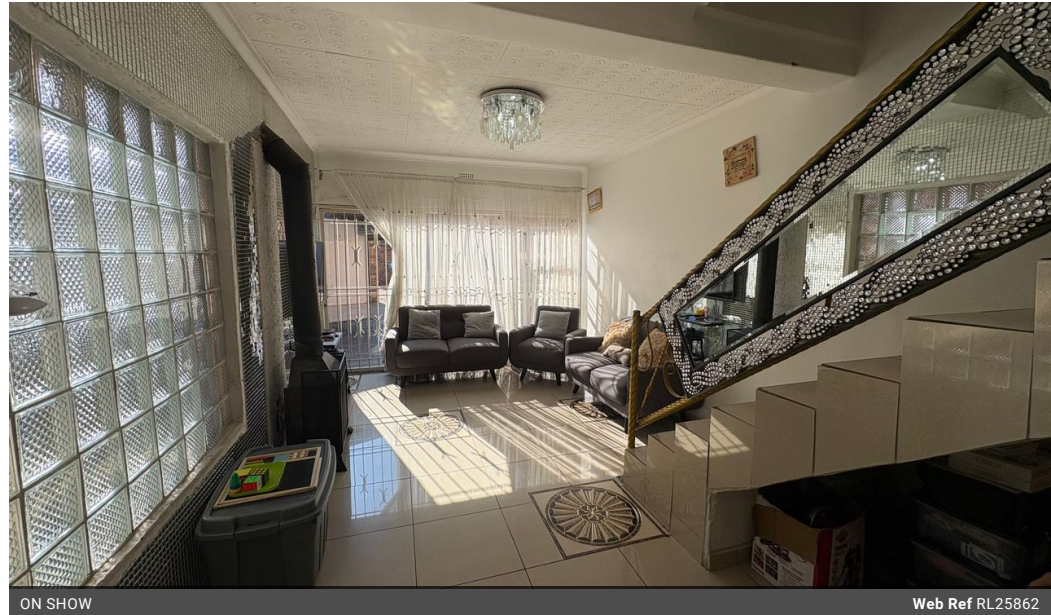
🕒 11:00 to 16:00

📅 Saturday, 12 July 2025

Directions

View by Appointment. Call Ayesha to
arrange a viewing on 083 212 9502

3 Bedroom Duplex For Sale in Benoni Central



ON SHOW

Web Ref RL25862



R870,000

🛏️ 3 🚿 1.5 🚗 2

Monthly Bond Repayment R8,832.49

Calculated over 20 years at 10.75% with no deposit.

Transfer Costs R28,244.00 **Bond Costs** R21,450.00

These calculations are only a guide. Please ask your conveyancer for exact calculations.

Monthly Levy R1,830 **Monthly Rates** R665

Prime Location! Beautiful 3 Bedroom Family Duplex in the heart of Benoni Central! Come and see!

Ideally and perfectly positioned. A must see...

Enjoy the tranquility of this lovely unit nestled in the heart of Benoni.

This home is very close to schools, hospital and shopping centres, and easy access to the highway.

This beautiful duplex has 3 spacious bedrooms with built in cupboards and 1 1/2 bathrooms.

There is a modern kitchen with beautiful Caesar stone counter tops, built in kitchen cupboards, glass top hob with one gas plate, double eye level oven as well as an island table. There is also space to fit a double door fridge.

There is an open plan family room and dining room leading to a small garden outside, the...

Features

Interior

| | |
|--------------|-----|
| Bedrooms | 3 |
| Bathrooms | 1.5 |
| Kitchens | 1 |
| Recep. Rooms | 2 |
| Furnished | No |

Exterior

| | |
|----------|-------|
| Garages | 2 |
| Security | No |
| Pool | Yes |
| Views | False |

Sizes

| | |
|------------|---------|
| Floor Size | 110m² |
| Land Size | 3,579m² |