



Mabette Vermaak
0824595435
mabette@mythreepercent.com



Louise Dobson
0827255866

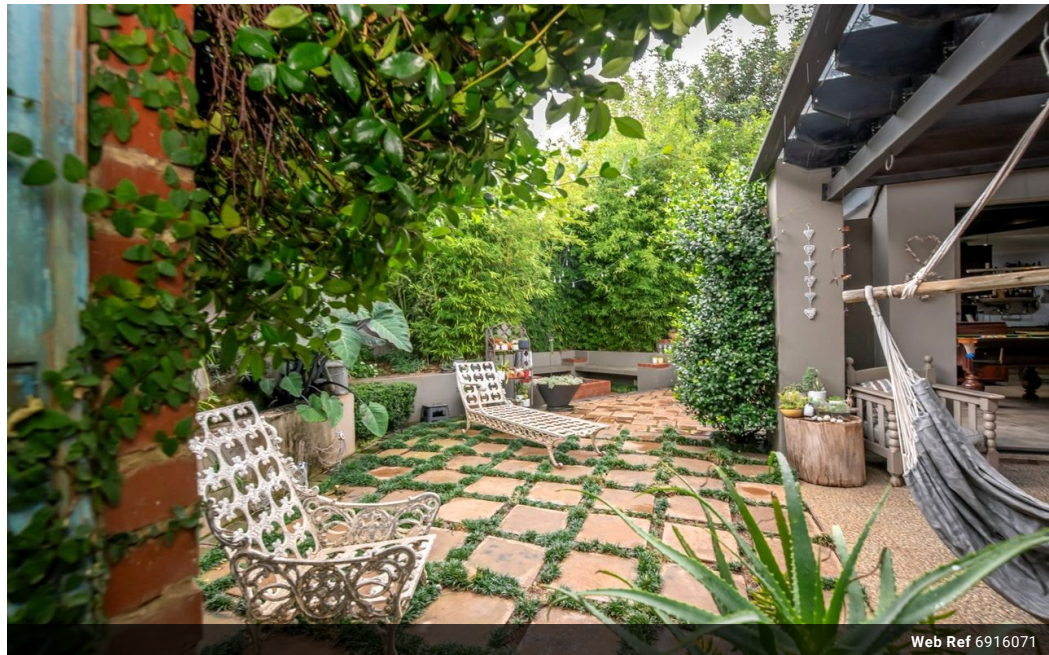
louise@mythreepercent.com

Contact Centurion - Highveld, Eco
Park & Midstream Estates

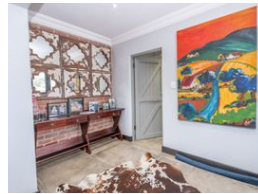
012 6644113

Units 23 & 24 Norma Jean Square
244 Jean Avenue
Centurion
0157

4 Bedroom House For Sale in Midstream Ridge Estate, Midstream Estate



Web Ref 6916071



R5,600,000

🛏 4 🚿 4.5 🏠 3

Monthly Bond Repayment R56,852.82

Calculated over 20 years at 10.75% with no deposit.

Transfer Costs R473,807.00 **Bond Costs** R65,785.00

These calculations are only a guide. Please ask your conveyancer for exact calculations.

Monthly Levy R2,350 **Monthly Rates** R3,200

4 Bedroom House For Sale in Midstream Ridge Estate, Midstream Estate

Welcome to this inviting 4-bedroom, single-level farm-style home, nestled on a sought-after corner stand right across from a stunning park. Perfect for entertaining, the spacious living areas flow effortlessly into a beautiful outdoor space, ideal for gatherings with family and friends. Surrounded by a lush, low-maintenance garden, this home offers a peaceful retreat where you can relax and enjoy the beauty of nature.

Please don't hesitate to contact me TODAY to make an appointment to view this beautiful family home.

ACCOMMODATION INCLUDES:

- Inviting entrance.
- Convenient guest toilet.
- Open plan lounge, dining room, and kitchen.
- Farm-style kitchen with a large breakfast island, gas stove, and electric oven.
- Large walk-in pantry.
- Spacious scullery/laundry room.
- Storage room.
- A generous entertainment...

Features

Pets Allowed Yes

Interior
Bedrooms 4
Bathrooms 4.5
Kitchens 1
Studies 1

Exterior
Garages 3
Security No
Pool No

Sizes
Floor Size 379m²
Land Size 814m²

