



Sannelie Stoltz
083 330 8095
sannelie@threepercent.com



Schalk van Wyk
083 320 8084

schalk@threepercent.com

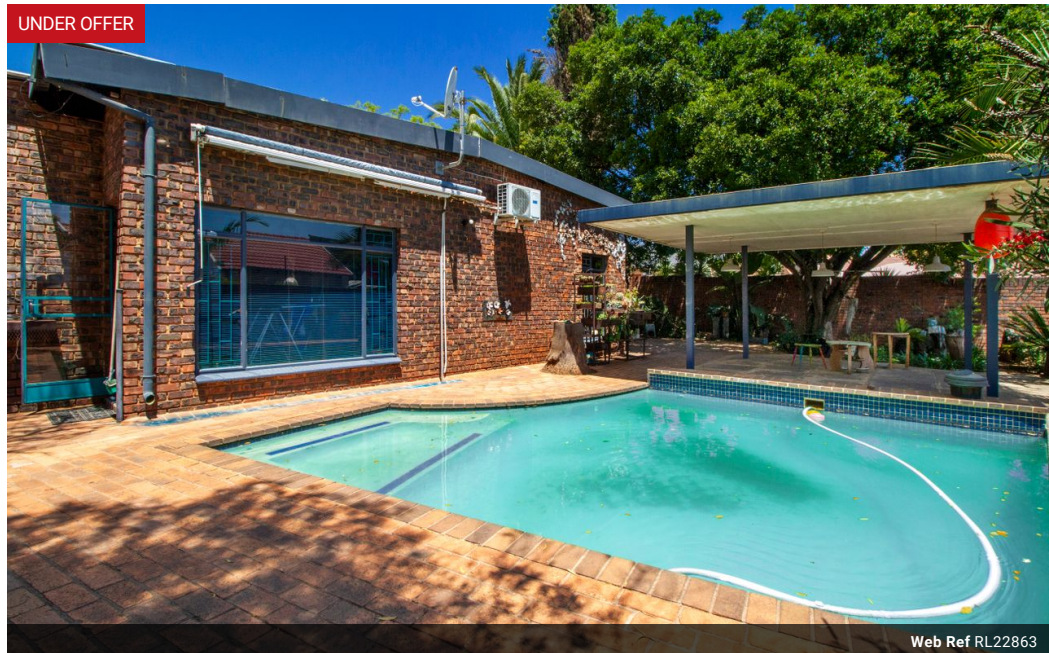
Contact Pretoria East

083 3208084

1st Floor, 59 Regency Drive, Route 21
Corporate Park, Irene, 0174

4 Bedroom House For Sale in Pierre Van Ryneveld

UNDER OFFER



Web Ref RL22863



R1,760,000

4 2 3

Monthly Bond Repayment R18,166.52
Calculated over 20 years at 11% with no deposit.

Transfer Costs R58,639.00 **Bond Costs** R30,875.00

These calculations are only a guide. Please ask your conveyancer for exact calculations.

Monthly Rates R1,015

4 Bedroom House for sale in Pierre van Ryneveld

4 Bedroom House For Sale in Pierre van Ryneveld

This artistic decorated home boasts 4 spacious bedrooms, with 2 bathrooms (main bedroom en-suite), 3 living areas and an open plan kitchen. The kitchen is fitted with granite tops, gas hob, electric oven, ample cupboard space and a scullery with space for 2 appliances. The open plan tiled living-area consists of a living-room, TV room, dining room and kitchen. From this area another living room is ideally situated for it flows out to the swimming pool area with its covered patio.

All 4 bedrooms is north facing, and also have screed floors. The en-suite bathroom is fitted with a toilet, basin and shower, where the second bathroom has a bath, toilet and basin. All the bedrooms have built-in cupboards.

A double automated garage, automated gate and 3 covered parkings completes...

Features

Pets Allowed Yes

Interior

Bedrooms	4
Bathrooms	2
Kitchens	1
Recep. Rooms	3
Furnished	No

Exterior

Garages	3
Carports / Parkings	3
Security	No
Pool	Yes
Views	False

Sizes

Floor Size	250m ²
Land Size	920m ²