



Teresa De La Querra
0721086620
teresa@threepercent.com

Contact East London

043 7481735

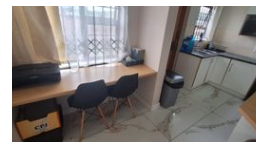
32 Pearce Street
Berea
East London
5200

3 Bedroom Townhouse For Sale in Abbotsford

NEW



Web Ref 7225588



R1,060,000

3 3 1

Monthly Bond Repayment R10,582.83

Calculated over 20 years at 10.5% with no deposit.

Transfer Costs R32,851.00 **Bond Costs** R25,220.00

These calculations are only a guide. Please ask your conveyancer for exact calculations.

Monthly Levy R1,000 **Monthly Rates** R1,235

3 Bedroom Townhouse For Sale in Abbotsford

3-Bedroom Duplex Townhouse for Sale in Abbotsford – Summerwoods Complex

Situated in the sought-after and secure Summerwoods Complex, this neat and well-managed townhouse offers the perfect blend of comfort, convenience, and peace of mind.

Downstairs features a spacious lounge, a guest toilet, and a well-appointed kitchen with built-in cupboards and an undercounter stove flowing seamlessly into the living area.

Upstairs boasts 3 generously sized bedrooms with ample cupboard space, and 2 bathrooms including a modern main en-suite

Additional features include:

- * Single roll-up garage for secure parking
- * Large courtyard – ideal for pets or outdoor entertaining
- * Excellent security with 24-hour access control, electric fencing, burglar gates, and burglar bars

Features

Pets Allowed		Yes		
Interior			Exterior	
Bedrooms	3		Garages	1
Bathrooms	3		Carports / Parkings	1
Kitchens	1		Security	Yes
Recep. Rooms	1		Pool	No
			Sizes	
			Floor Size	137m ²
			Land Size	227m ²