



Monique Moolman
071 254 5439
moniquemoolman@threepercent.com



Schalk van Wyk
083 320 8084

schalk@threepercent.com

Contact Pretoria East

083 3208084

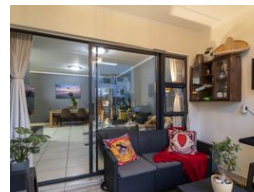
1st Floor, 59 Regency Drive, Route 21
Corporate Park, Irene, 0174

3 Bedroom Apartment For Sale in Greenstone Crest



SOLE MANDATE

Web Ref RL25657



R1,299,000

Monthly Bond Repayment R13,187.82

Calculated over 20 years at 10.75% with no deposit.

Transfer Costs R37,587.00 **Bond Costs** R27,105.00

These calculations are only a guide. Please ask your conveyancer for exact calculations.

Monthly Levy R1,860.4 **Monthly Rates** R1,132.8

🛏 3 🚿 2

Modern, First floor, 3-bed, 2-bath apartment with balcony

A Cozy and Inviting First-Floor Retreat with Everything You Need

Welcome to this charming and well-appointed 3-bedroom, 2-bathroom apartment, perfectly nestled on the first floor of a sought-after lifestyle complex. From the moment you walk in, you're embraced by a warm and welcoming atmosphere that truly feels like home.

Open-Plan Living: The heart of the home is a beautifully designed open-plan layout that seamlessly blends the dining area, lounge, and kitchen, creating a spacious and inviting living space. The lounge opens onto a private balcony, perfect for morning coffee or relaxed evenings.

Fully Equipped Kitchen: The kitchen is both modern and practical, offering generous counter space and equipped with a dishwasher, washing machine, tumble dryer, and a space for a single-door fridge — everything you need for...

Features

Pets Allowed Yes

Interior

Bedrooms	3
Bathrooms	2
Kitchens	1
Recep. Rooms	1
Furnished	No

Exterior

Carports / Parkings	2
Security	Yes
Pool	Yes
Views	False

Sizes

Floor Size	99m²
------------	------

