



Monique Moolman

071 254 5439

moniquemoolman@threepercent.com



Schalk van Wyk

083 320 8084

schalk@threepercent.com

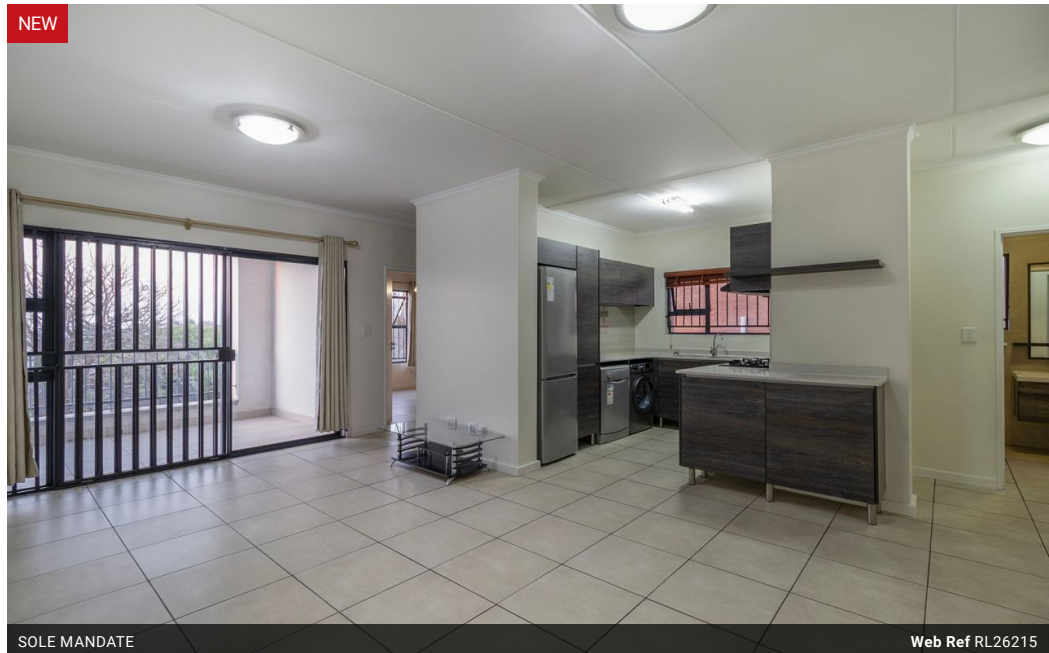
Contact Pretoria East

083 3208084

1st Floor, 59 Regency Drive, Route 21
Corporate Park, Irene, 0174

3 Bedroom Apartment For Sale in Greenstone Crest

NEW



SOLE MANDATE

Web Ref RL26215



R1,349,000

Monthly Bond Repayment R13,468.14

Calculated over 20 years at 10.5% with no deposit.

Transfer Costs R39,189.00

Bond Costs R27,105.00

These calculations are only a guide. Please ask your conveyancer for exact calculations.

Monthly Levy R2,033.4

Monthly Rates R1,190.8

🛏 3 🚿 2

Modern 3-Bedroom Apartment in Greenstone Crest

Stylish, spacious, and secure – this newly painted first-floor unit offers a lock-up-and-go lifestyle with top-class amenities, perfectly located in the heart of Greenstone Hill.

Step Inside:

From your double shaded net parking, walk up to the first floor and into an inviting open-plan dining and living area. Glass sliding doors open onto a balcony, perfect for morning coffees, evening sundowners, or entertaining friends.

The Kitchen:

The modern open-plan kitchen comes fully equipped for convenience and style, featuring:

Gas hob for efficient cooking

Single door fridge, washing machine, dishwasher, and tumble dryer included

Prepaid electricity for effortless budget control

Bedrooms & Bathrooms:

Features

Pets Allowed Yes

Interior

Bedrooms	3
Bathrooms	2
Kitchens	1
Recep. Rooms	2
Furnished	No

Exterior

Carports / Parkings	2
Security	Yes
Pool	Yes
Views	False

Sizes

Floor Size	99m²
Land Size	77,609m²

