



Monique Moolman
 071 254 5439
 moniquemoolman@threepercent.com



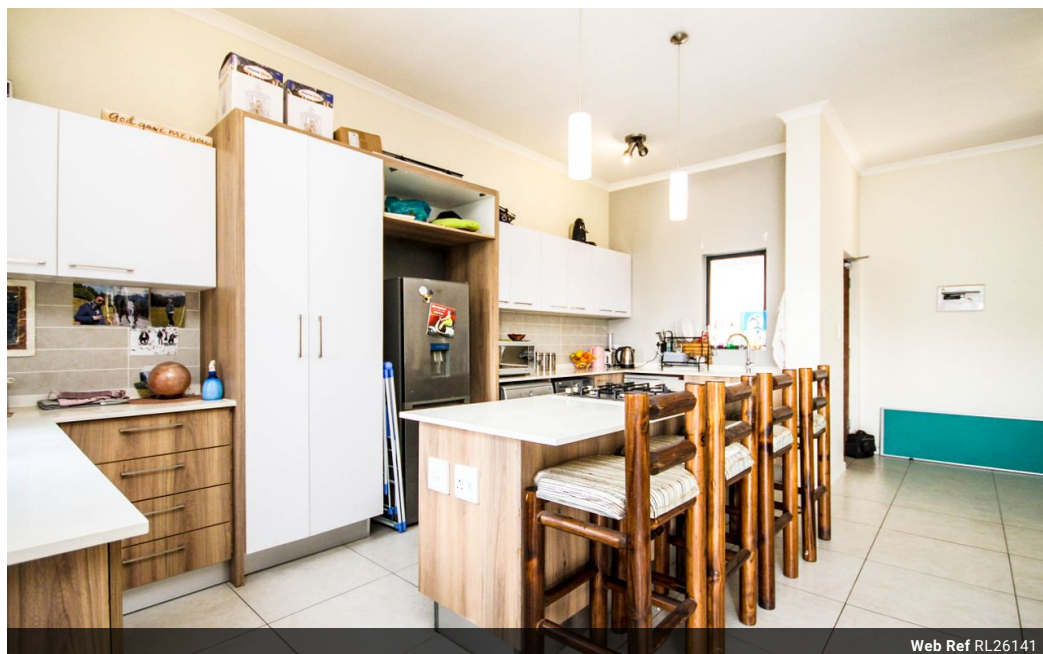
CLINTON RAS
 072 313 2919
 clinton@raslawsa.com

Contact Jhb - Kempton Park

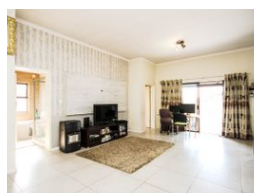
072 3132919

12 Marais Street
 Rynfield
 Benoni
 1511

2 Bedroom Apartment For Sale in Modderfontein



Web Ref RL26141



R1,500,000

🛏 2 🚿 2

Monthly Bond Repayment R14,975.70

Calculated over 20 years at 10.5% with no deposit.

Transfer Costs R45,887.00 **Bond Costs** R28,990.00

These calculations are only a guide. Please ask your conveyancer for exact calculations.

Monthly Levy R2,011.0 **Monthly Rates** R1,112.9

Modern lock-up and go - 2 Bed with Balcony & Built-in Braai – Fish Eagle View - Sole Mandate

Sole mandate

Step into a home that blends modern finishes with everyday comfort in this spacious 2-bedroom, 2-bathroom 2nd-floor apartment at the secure Fish Eagle View complex.

Features you'll love:

Welcoming open-plan dining and lounge area leading to a private balcony with a built-in braai – perfect for entertaining.

Stylish kitchen with a long island, gas stove & oven, and fully fitted appliances (dishwasher, washing machine, tumble dryer, single-door fridge).

Main bedroom with en-suite (shower, toilet, double his and hers basin).

Full guest bathroom with bath, shower, toilet, and single basin.

Prepaid electricity, water and gas for easy budgeting.

2 covered parking bays for convenience

Features

Pets Allowed		Yes			
Interior		Exterior		Sizes	
Bedrooms	2	Carports / Parkings	2	Floor Size	100m²
Bathrooms	2	Security	Yes	Land Size	74,402m²
Kitchens	1	Pool	Yes		
Recep. Rooms	1	Views	False		
Furnished	No				

