



Karla Strydom
083 450 5576
karla.strydom@threepercent.com



Melissa Strydom
083 321 2196

melissa.strydom@threepercent.com

Contact Jhb - Senderwood,
Observatory, Linksfield &
Cyrildene

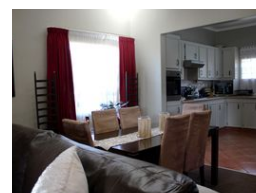
011 6225719

29 Whittaker's Way
Bedfordview
2007

3 Bedroom Freehold For Sale in Primrose Hill



Web Ref RL25840



R1,550,000

🛏 3 🚿 2

Monthly Bond Repayment R15,474.89

Calculated over 20 years at 10.5% with no deposit.

Transfer Costs R47,387.00 **Bond Costs** R28,990.00

These calculations are only a guide. Please ask your conveyancer for exact calculations.

Monthly Rates R1,600

Spacious, Well-Maintained Home with Versatile Extras in Primrose Hill

This neat and well-kept home in Primrose Hill offers comfortable living with excellent space, practicality, and added value. Conveniently located near schools, shopping centres, and major routes, it's ideal for families, or buyers looking for solid long-term potential.

The home features three well sized bedrooms, each with built-in cupboards, two of which are fitted with air conditioning. The two guest bedrooms include mirrored cupboard doors, while the main bedroom stands out with its own modern en suite bathroom featuring double vanities, a bath, and a shower. A second bathroom with both a bath and shower serves the remaining rooms.

The open-plan lounge, dining area, and kitchen create a practical and welcoming living space. The kitchen is fitted with an eye-level oven, gas hob, and plenty of cupboard space, ideal for...

Features

Pets Allowed		Yes			
Interior				SIZES	
Bedrooms	3			Land Size	613m²
Bathrooms	2				
Kitchens	1				
Recep. Rooms	2				
Studies	1				
Furnished	No				
Exterior					
Carports / Parkings	8				
Security	Yes				
Dom. Accom.	1				
Pool	Yes				
Views	False				

Extras

Air Conditioner Alarm System Backup Water Basin Bath, Toilet and Basin Built In Braai Built in Wardrobes Burglar Bars Carpets Carport Cooling Fans Covered Patio Electric Gate Granny Flat

