



Angelique Lourens  
068 684 4788  
angelique.l@threepercent.com

Contact Hartbeespoort

074 2118129

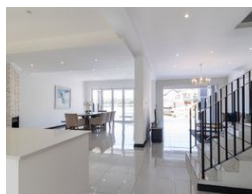
TBA

## 6 Bedroom House For Sale in Eagles Landing



SOLE MANDATE

Web Ref RL25728



**R5,800,000**

🛏 6 🚿 6 🚗 2

**Monthly Bond Repayment** R58,883.28

Calculated over 20 years at 10.75% with no deposit.

**Transfer Costs** R495,807.00 **Bond Costs** R65,785.00

These calculations are only a guide. Please ask your conveyancer for exact calculations.

**Monthly Levy** R3,100 **Monthly Rates** R2,500

### Luxurious 6-Bedroom Waterfront Home in Eagles Landing, Hartbeespoort

Experience exceptional lakeside living with this stunning 6-bedroom, 6-bathroom home located in the exclusive Eagles Landing Estate on the tranquil banks of Hartbeespoort Dam. Offering a rare blend of elegance, space, and functionality, this property is perfect for families and entertainers alike.

Welcome to our new EXCLUSIVE SOLE MANDATE

Property Features:

6 Spacious Bedrooms – Each with its own en-suite bathroom, ensuring privacy and comfort.

Guest Toilet – Conveniently located on the ground floor.

Modern Open-Plan Kitchen – Equipped with a gas stove, ample storage, and a separate scullery/washing room.

Elegant Living Spaces – Includes a formal dining room and a comfortable lounge that seamlessly open onto the deck with breathtaking dam views.

Entertainment Deck – With direct access to the dam, perfect for sunset views and...

### Features

**Pets Allowed** Yes

#### Interior

Bedrooms 6  
Bathrooms 6  
Kitchens 1  
Recep. Rooms 3  
Furnished Yes

#### Exterior

Garages 2  
Carports / Parkings 4  
Security Yes  
Dom. Accom. 1  
Pool Yes  
Views True

#### Sizes

Floor Size 620m²  
Land Size 728m²

#### Extras

24 Hour Access Air Conditioner Balcony Boat Launch Built In Braai Dam View

