



Melissa Strydom
083 321 2196
melissa.strydom@threepercent.com



Karla Strydom
083 450 5576

karla.strydom@threepercent.com

Contact Jhb - Senderwood,
Observatory, Linksfield &
Cyrildene

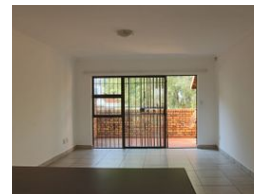
011 6225719

29 Whittaker's Way
Bedfordview
2007

2 Bedroom Sectional Title For Sale in Bruma



Web Ref RL19437



R849,990

2 1

Monthly Bond Repayment R8,486.13

Calculated over 20 years at 10.5% with no deposit.

Transfer Costs R28,334.00 **Bond Costs** R21,450.00

These calculations are only a guide. Please ask your conveyancer for exact calculations.

Monthly Rates R625

Sunny and bright with excellent security

Discover the art of easy living with this neat two bedroom, one bathroom unit. Entering through the secure front door you are greeted by a large open plan kitchen and lounge. The kitchen has ample cupboard space, double sink and breakfast counter. The kitchen looks out over the large tiled lounge which leads out onto a well sized balcony. The two bedrooms are tiled and fit with built in cupboards. The bathroom has a bath.

The complex is well looked after and offers a communal garden and pool. The property is well secured by being located in a boomed off area, 24-hour security guard, access control, electric fencing, security gates and burglar bars.

Easy access to all major highways, amenities, shopping malls like Eastgate and Bedford Centre and excellent schools.

Contact us today to make this your next home or investment.

Features

Interior		Exterior		Sizes	
Bedrooms	2	Carports / Parkings	1	Floor Size	82m²
Bathrooms	1	Security	Yes	Land Size	8,271m²
Kitchens	1	Pool	Yes		
Recep. Rooms	2	Views	False		
Furnished	No				

