



Karla Strydom
083 450 5576
karla.strydom@threepercent.com



Melissa Strydom
083 321 2196

melissa.strydom@threepercent.com

Contact Jhb - Senderwood,
Observatory, Linksfield &
Cyrildene

011 6225719

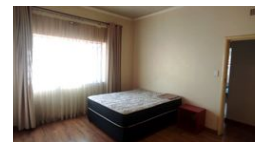
29 Whittaker's Way
Bedfordview
2007

4 Bedroom House For Sale in Cyrildene



SOLE MANDATE

Web Ref 4782299



R1,800,000

4 2.5

Monthly Bond Repayment R18,274.12

Calculated over 20 years at 10.75% with no deposit.

Transfer Costs R61,039.00 **Bond Costs** R30,875.00

These calculations are only a guide. Please ask your conveyancer for exact calculations.

The right location with loads of potential

This income generating property is ideally located and have loads of potential. Entering through the back door you are greeted by a large kitchen with ample built in cupboards. The kitchen overlooks the dining room which allows for all inclusive dinner parties. A well sized lounge is situated off of the dining room. The home has two sun rooms which can be used as studies or additional bedrooms. Four large sun drenched bedrooms all with built in cupboards. The first bathroom has both a shower and a bath and the second bathroom includes a shower. An additional single bathroom ensure for extra convenience.

The home is situated on a large stand and includes numerous outbuildings which can be converted into income generating cottages. A large warehouse as well as 8 small rooms are some of the additional benefits one gets to enjoy...

Features

Interior		Exterior		Sizes	
Bedrooms	4	Carports / Parkings	1	Land Size	1,732m²
Bathrooms	2.5	Security	Yes		
Kitchens	1	Pool	No		
Recep. Rooms	3	Views	False		
Furnished	No				