



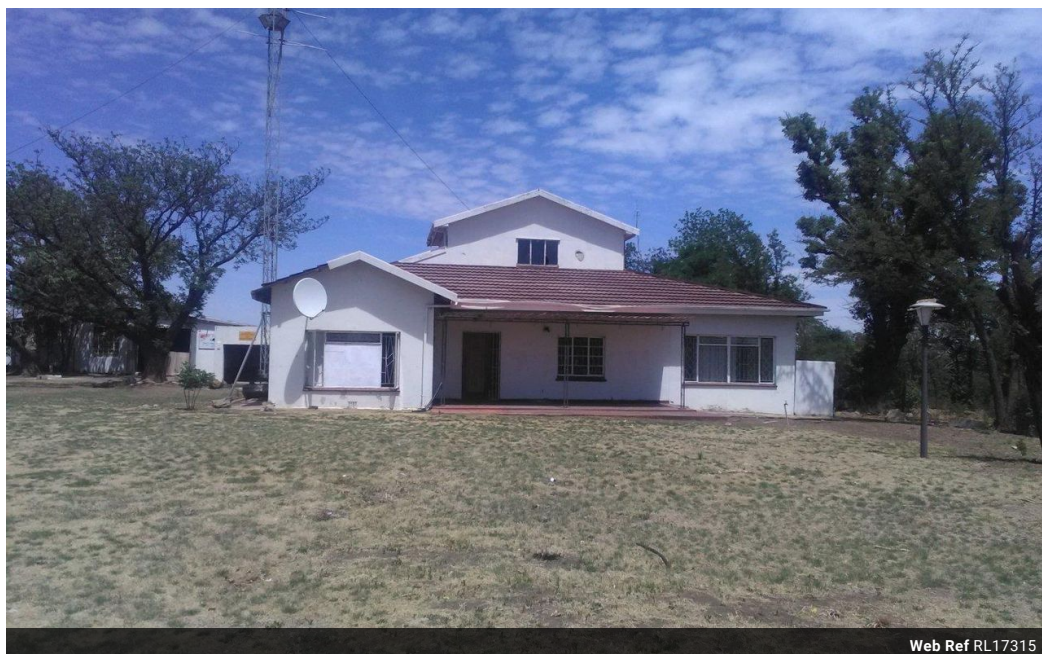
Desire Forster
072 415 9406
desire@threepercent.com

Contact Parys & surrounds

082 9044728

2904 Ibis Close
Parys Golf Estate

14m² Farm For Sale in Koppies Rural



Web Ref RL17315

R750,000

🏠 3 🚿 1

Monthly Bond Repayment R7,614.22

Calculated over 20 years at 10.75% with no deposit.

Transfer Costs R25,898.00 **Bond Costs** R19,565.00

These calculations are only a guide. Please ask your conveyancer for exact calculations.

SOLE MANDATE! 14 Hectar plot with lots of infrastructure.

This plot consists of the following:

- *14 Hectars
- *Stream from Weltevreden dam runs through farm.
- *New tar road from Parys to Koppies runs next to the farm.
- *3 Bedroom semi-duplex house
- *2 Garages with storage room
- *Rondawel
- *More or less 30 big cages that can be used for pig sty's. It was built and used for dog breeding.
- *1 Big shed
- *Outbuilding
- *Old dairy
- *2 Workers houses

Call today for a viewing.

Features

Interior

Bedrooms	3
Bathrooms	1
Kitchens	1
Studies	1
Furnished	No

Exterior

Security	No
Pool	No
Views	False

Sizes

Land Size	14m ²
-----------	------------------



<https://www.threepercent.com>