



Zelda Da Silva
083 298 1299
zelda@threepercent.com

Contact Parys & surrounds

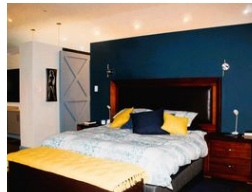
082 9044728

2904 Ibis Close
Parys Golf Estate

3 Bedroom Freehold For Sale in Parys Golf & Country Estate



Web Ref RL26149



R4,695,000

3 3.5 4

Monthly Bond Repayment R46,873.94

Calculated over 20 years at 10.5% with no deposit.

Transfer Costs R366,798.00 **Bond Costs** R59,150.00

These calculations are only a guide. Please ask your conveyancer for exact calculations.

Monthly Levy R2,950 **Monthly Rates** R3,400

Stunning 3 Bedroom House for Sale in Parys Golf & Country Estate

Discover this beautiful river-facing home in the sought-after Parys Golf & Country Estate – where tranquil country living meets the charm of a vibrant village-style community.

Scenic Setting:

Enjoy uninterrupted views of the Vaal River across a protected buffer zone that will never be developed, as well as sweeping vistas of the 12th fairway and green. Perfectly positioned above the flood line, the property also offers direct access to the estate's boat launch and jetty area.

Home Features:

Upstairs: An exceptionally spacious main en-suite bedroom with a private 140m² patio.

Downstairs: A welcoming entrance leads into open-plan living spaces that include the kitchen, dining, lounge, and TV areas. Two additional bedrooms with a bathroom and guest loo complete this level.

Extras: Pantry, scullery, hobby room with built-in...

Features

Pets Allowed Yes

Interior

Bedrooms	3
Bathrooms	3.5
Kitchens	1
Recep. Rooms	2
Studies	1
Furnished	No

Exterior

Garages	4
Carports / Parkings	5
Security	Yes
Pool	Yes
Views	True

Sizes

Floor Size	480m²
Land Size	755m²

