



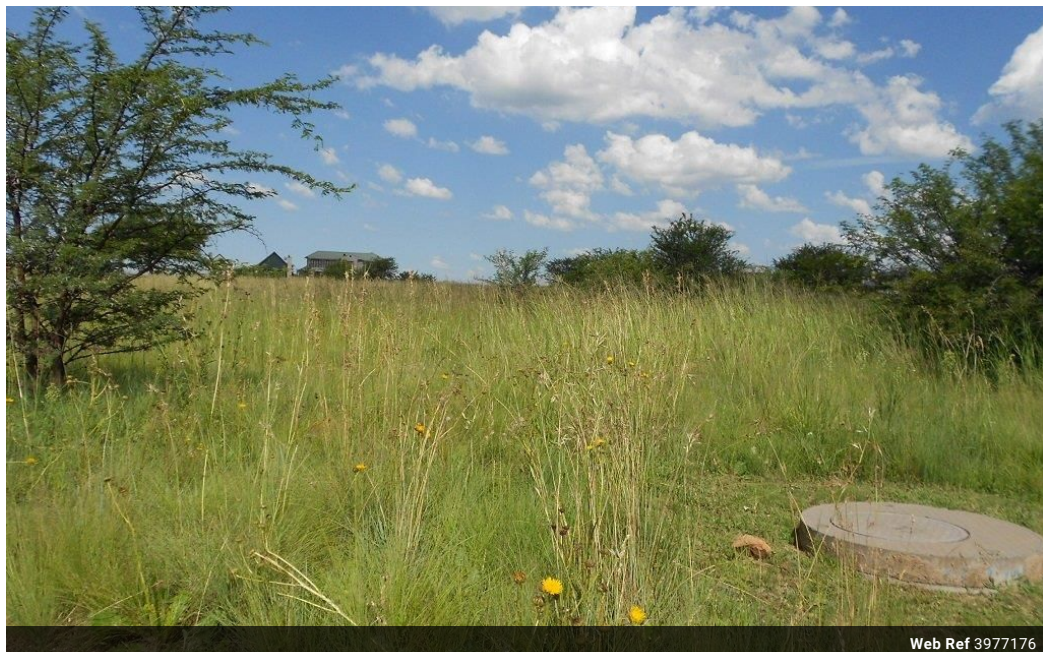
Forster Attorneys -
Martie Keulder
072 332 8061
martie@threepercent.com

Contact Parys & surrounds

082 9044728

2904 Ibis Close
Pary's Golf Estate

808m² Vacant Land For Sale in Parys Golf & Country Estate



Web Ref 3977176



R395,000

Monthly Bond Repayment R4,010.15

Calculated over 20 years at 10.75% with no deposit.

Transfer Costs R16,806.00 **Bond Costs** R11,960.00

These calculations are only a guide. Please ask your conveyancer for exact calculations.

Monthly Levy R1,000 **Special Levy** R1,700

Where do you want to live?

Be part of this vibrant a fast-growing estate. This 723sqm vacant stand is up for grabs – do not delay on this great offer to build your new 2020 home in the much sought-after estate.

Parys Golf and Country Estate is a luxury golf estate where you can experience the bush, the calming effects of the Vaal River and landscaped gardens.

You deserve to be in this address.

With all the infra structure completed and 24/7 gated security in place, you could still be one of the privileged few to own an opportunity to live in the safe and tranquil surroundings of Parys Golf and Country Estate.

This beautiful estate I busy filling up at a rapid speed. The house seems to pop up overnight, so not miss out on this fantastic opportunity. Furthermore, the estate offers upmarket homes and a luxurious lifestyle.

Click or call 3%.com...

Features