



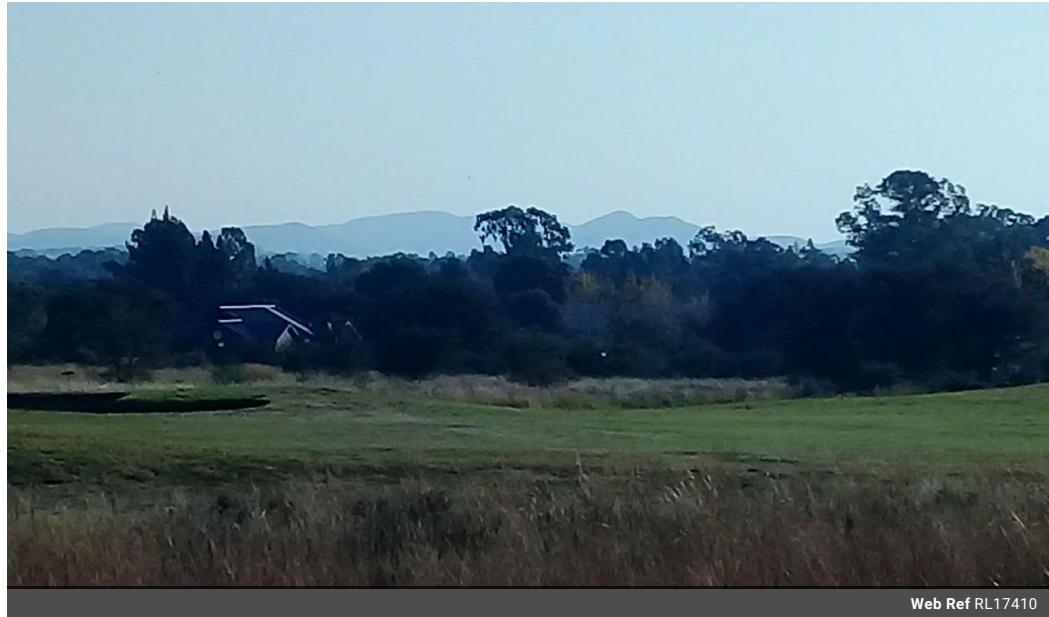
Forster Attorneys -
Annabelle Forster Els
082 061 8460
annabelle@threepercent.com

Contact Parys & surrounds

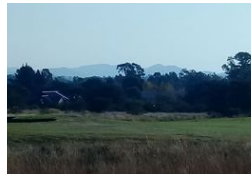
082 9044728

2904 Ibis Close
Pary's Golf Estate

846m² Vacant Land For Sale in Parys Golf & Country Estate



Web Ref RL17410



R410,000

Monthly Bond Repayment R4,093.36

Calculated over 20 years at 10.5% with no deposit.

Transfer Costs R17,984.00 **Bond Costs** R12,935.00

These calculations are only a guide. Please ask your conveyancer for exact calculations.

Monthly Levy R1,865

A stand with a view.

It is one of the highest stands on the estate with the most beautiful panoramic views of the estate, fairway & hills. It is 846sq in size and is bordered by one house on the one side.

At Parys Golf & Country Estate we have vibrant bird life & Rooibok roaming between the houses. The estate also offers boat launching facilities for the water enthusiast.

A beautiful view for the privileged few, call today to arrange a viewing.

Features

