



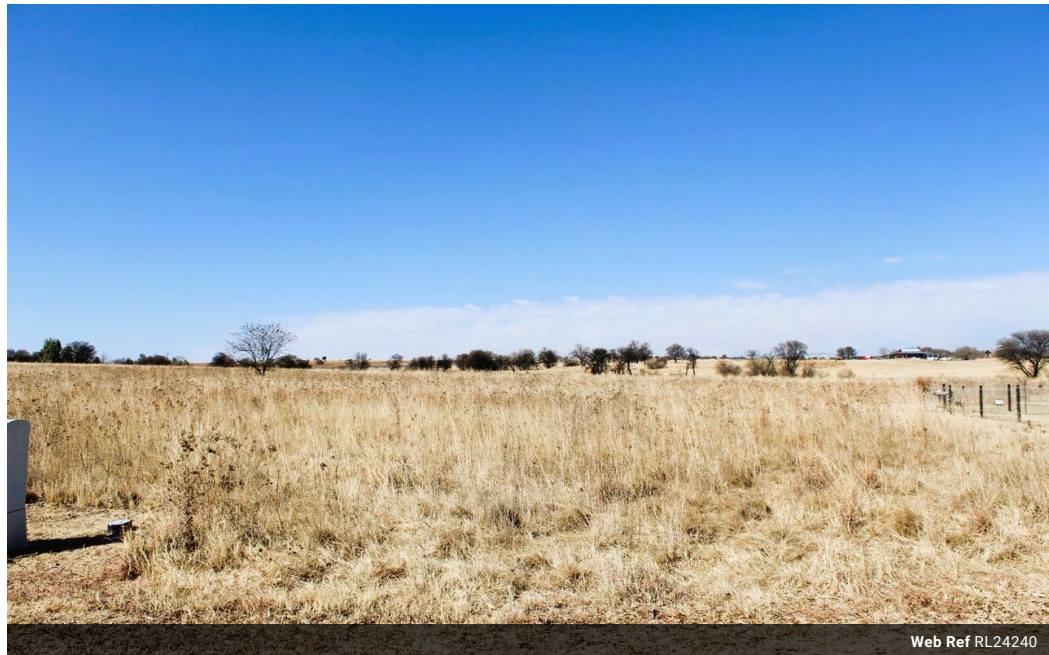
Zelda Da Silva  
083 298 1299  
zelda@threepercent.com

Contact Parys & surrounds

082 9044728

2904 Ibis Close  
Pary's Golf Estate

647m<sup>2</sup> Vacant Land For Sale in Parys Golf & Country Estate



Web Ref RL24240



**R378,750**

**Monthly Bond Repayment** R3,845.18

Calculated over 20 years at 10.75% with no deposit.

**Transfer Costs** R16,806.00    **Bond Costs** R11,960.00

These calculations are only a guide. Please ask your conveyancer for exact calculations.

**Monthly Levy** R2,750    **Monthly Rates** R800

### Vacant land in Secure Parys Golf & Country Club Estate

Discover the perfect canvas for your dream home with this exceptional 647 m<sup>2</sup> erf located within the prestigious Parys Golf and Country Club Estate. Nestled in a secure and serene complex, this land offers not only a prime location but also a lifestyle of unparalleled convenience and luxury.

Enjoy breathtaking views of the river, where you can witness a vibrant array of local wildlife, including graceful bucks, playful ducks, and an abundance of bird species. This unique setting provides a tranquil retreat with natural beauty right at your doorstep.

As a resident of this esteemed estate, you will have access to an impressive range of top-notch amenities. Perfect your swing at the world-class golf course, unwind at the halfway house, or indulge in gourmet dining at the renowned 1919 Restaurant and Rollers Restaurant. For those...

### Features

