



Forster Attorneys -
Martie Keulder
072 332 8061
martie@threepercent.com

Contact Parys & surrounds

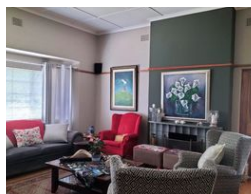
082 9044728

2904 Ibis Close
Parys Golf Estate

9 Bedroom House For Sale in Parys



Web Ref RL25699



R4,345,000

🛏 9 🚿 9

Monthly Bond Repayment R43,379.61

Calculated over 20 years at 10.5% with no deposit.

Transfer Costs R323,962.00 **Bond Costs** R55,380.00

These calculations are only a guide. Please ask your conveyancer for exact calculations.

Monthly Rates R850

Versatile Living Prime Location – Perfect as Family Home with one Flatlet and Profitable Guesthouse!

We are so excited to present this property.

Discover the ultimate in flexibility and style with this 'all-in-one' magnificent property, ideally situated in a sought-after location only 1km from the Rivershed Shopping Mall.

Enjoy the best of both worlds with this rare gem that combines family living, gardening, outdoor activities as well as the option of a ready-to-run guesthouse,

offering immediate income. This exceptional residence has it all.

We would be delighted to welcome you for a private tour of this extraordinary, once-in-a-lifetime property.

The house offers you the following:

Main house:

Bedrooms:

The main house is thoughtfully designed and beautifully appointed, featuring two spacious and elegant bedrooms. The master bedroom is a haven featuring ample cupboard space and boasts with a luxurious en-suite, complete...

Features

Pets Allowed	Yes				
Interior		Exterior		Sizes	
Bedrooms	9	Carports / Parkings	10	Land Size	1,475m²
Bathrooms	9	Security	Yes		
Kitchens	1	Pool	Yes		
Recep. Rooms	3	Views	False		
Studies	1				
Furnished	No				
Extras					
Air Conditioner Alarm System Backup Water Blinds Country Living Electric Gate Garden Flatlet Gas Hob Queen Bed Laundry Steel					