



**Jenny Venter**  
0824918144  
jenny.v@threepercent.com



**Margie Goosen**  
0839512199  
margie@dlcinc.co.za

Contact Gqeberha (Port  
Elizabeth)

041 5835773

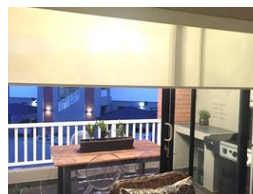
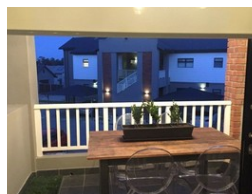
81 Erusmas Drive  
Summerstrand  
Port Elizabeth  
6001

## 2 Bedroom Flat For Sale in Lorraine



SOLE MANDATE

Web Ref 2484521



**R829,500**

🛏 2 🚿 2

**Monthly Bond Repayment** R8,281.56

Calculated over 20 years at 10.5% with no deposit.

**Transfer Costs** R28,334.00 **Bond Costs** R21,450.00

These calculations are only a guide. Please ask your conveyancer for exact calculations.

**Monthly Levy** R865 **Monthly Rates** R579

### 2 Bedroom 2 Bathroom Investment Property In Pine Creek Village

Immaculate well positioned 2 Bedroom unit with up-market finished. 2 Beautiful Tiled Bathrooms. Porcelain tiles though out the unit. Fitted kitchen with granite tops, space for washing machine and dishwasher. Built in stove, oven and hob. Beautiful light fittings. Open plan living area with sliding doors that lead out to a tiled balcony. Secure parking bay and access control entrance. Well kept and managed complex. Tenanted for R6 500pm until en of April 2018.  
Call Jenny or Margie now to view this stunning apartment.

### Features

#### Interior

Bedrooms	2
Bathrooms	2
Kitchens	1
Recep. Rooms	2

#### Exterior

Carports / Parkings	1
Security	Yes
Pool	No

#### Sizes

Floor Size	78m <sup>2</sup>
------------	------------------

