



Morne Botha
0827095529
morne@dlcinc.co.za



Jenny Venter
0824918144
jenny@dlcinc.co.za

Contact Gqeberha (Port Elizabeth)

041 5835773

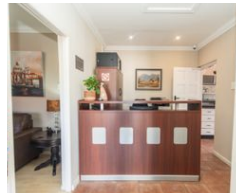
81 Erusmas Drive
Summerstrand
Port Elizabeth
6001

8 Bedroom House For Sale in Walmer



SOLE MANDATE

Web Ref 6996979



R5,950,000

8 8

Monthly Bond Repayment R60,406.12
Calculated over 20 years at 10.75% with no deposit.

Transfer Costs R512,307.00 **Bond Costs** R65,785.00
These calculations are only a guide. Please ask your conveyancer for exact calculations.

Monthly Rates R1,401

Guest Lodge - Your Peaceful Urban Retreat in Walmer, Port Elizabeth

Discover unparalleled tranquility and luxury at this stunning guest lodge, nestled in the leafy suburb of Walmer. This exceptional lodge blends the vibrancy of city living with the serenity and warmth of an authentic African sanctuary.

The essence of this remarkable retreat lies in its peaceful atmosphere. Guests are treated to an indulgent experience characterized by sophisticated décor, meticulous attention to detail, and graceful gardens that provide an atmosphere of pure relaxation.

Boasting 8 spacious bedrooms, the guest lodge ensures ample comfort for guests and visitors alike. It is equipped with borehole water for sustainable water supply and a backup power system with batteries to guarantee uninterrupted convenience and peace of mind. Guests can also enjoy modern amenities, including fibre internet for seamless...

Features

Interior		Exterior		Sizes	
Bedrooms	8	Carports / Parkings	10	Floor Size	327m ²
Bathrooms	8	Security	Yes		
Kitchens	1	Pool	Yes		
Recep. Rooms	2				
Furnished	Yes				

