



**Clarel van Vuuren**  
082 652 8123  
clarelv@threepercent.com



**Schalk van Wyk**  
083 320 8084

schalk@threepercent.com

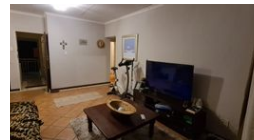
Contact Pretoria East

083 3208084

1st Floor, 59 Regency Drive, Route 21  
Corporate Park, Irene, 0174



Web Ref RL21572



**R799,990**

2 1 1

**Monthly Bond Repayment** R7,986.94

Calculated over 20 years at 10.5% with no deposit.

**Transfer Costs** R25,877.00 **Bond Costs** R19,565.00

These calculations are only a guide. Please ask your conveyancer for exact calculations.

**Monthly Levy** R1,300

**Monthly Rates** R500

**Sectional Title Levy** R0.0

**Special Levy** R0.0

Beginners Luck!!! Well maintained 2 bedroom unit in Boardwalk Villas.

Ready to move in townhouse!!

A well looked after 2 bedroom unit, located in a prime position near school, medical facilities and several shopping centres, offers an open plan living area, a well designed kitchen, 2 bedrooms, 1 full bathroom, a lock-up garage, a spacious balcony and secure open parking. This second floor unit is situated within a security complex with permanent security at the security gate.

Property Features:

2 Tiled bedrooms with built in cupboards

1 Full bathroom

Tiled open plan living area

Well designed kitchen with electric stove / extractor fan and space for washing machine or dish washer.

Balcony

Lock up garage and open parking space for guest

Internet

Low levies

This is a property worth seeing for the Investor or beginner!!

## Features

### Interior

Bedrooms	2
Bathrooms	1
Kitchens	1
Recep. Rooms	2
Furnished	No

### Exterior

Garages	1
Security	No
Pool	No
Views	False

### Sizes

Floor Size	82m²
Land Size	36,792m²