



Nicolene Bierman
082 892 0724
nicolene@threepercent.com



Schalk van Wyk
083 320 8084

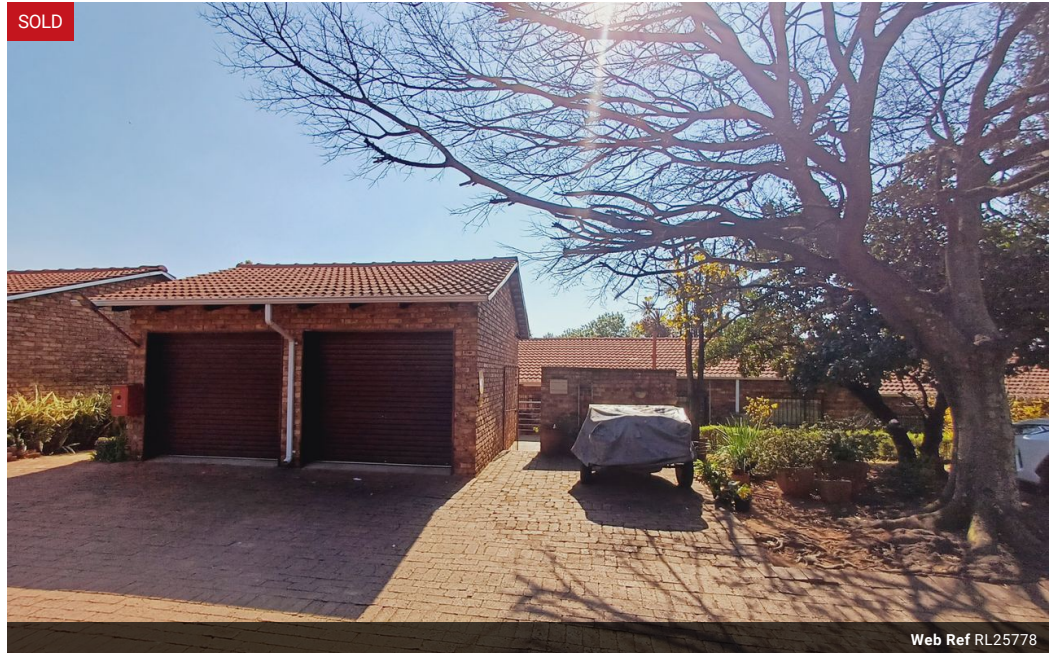
schalk@threepercent.com

Contact Pretoria East

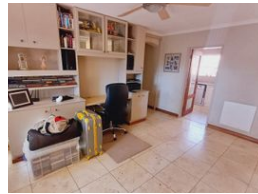
083 3208084

1st Floor, 59 Regency Drive, Route 21
Corporate Park, Irene, 0174

3 Bedroom Townhouse Sold in Faerie Glen



Web Ref RL25778



R1,750,000

3 2 2

Monthly Bond Repayment R17,471.65

Calculated over 20 years at 10.5% with no deposit.

Transfer Costs R58,141.00 **Bond Costs** R30,875.00

These calculations are only a guide. Please ask your conveyancer for exact calculations.

Monthly Levy R2,414.6 **Monthly Rates** R1,016.7

Charming 3-Bedroom Home in Sought-After Welgelegen, Faerie Glen

Nestled in one of the most desirable complexes in Faerie Glen, this charming 3-bedroom home offers the perfect sanctuary—whether you're a young family or looking to downscale in style.

Upon entering, you're welcomed by a spacious, sun-filled living room with large windows that offer tranquil views of the lush, established garden.

The home also features two additional living areas—one currently used as an office. These versatile spaces can easily serve as a dining room, study, children's playroom, or a second lounge, depending on your family's needs.

The newly renovated kitchen is a delight, featuring light oak cabinetry, granite countertops, an electric oven and hob, extractor fan, double basin with an additional rinse sink, a large pantry, and space for two appliances.

The main bedroom is a peaceful retreat, complete with...

Features

Pets Allowed		Yes			
Interior				Exterior	
Bedrooms	3			Garages	2
Bathrooms	2			Carports / Parkings	1
Kitchens	1			Security	Yes
Recep. Rooms	2			Pool	Yes
Studies	1			Views	False
Furnished	No				
				Sizes	
				Floor Size	127m²

