



Clarel van Vuuren
082 652 8123
clarelv@threepercent.com



Schalk van Wyk
083 320 8084

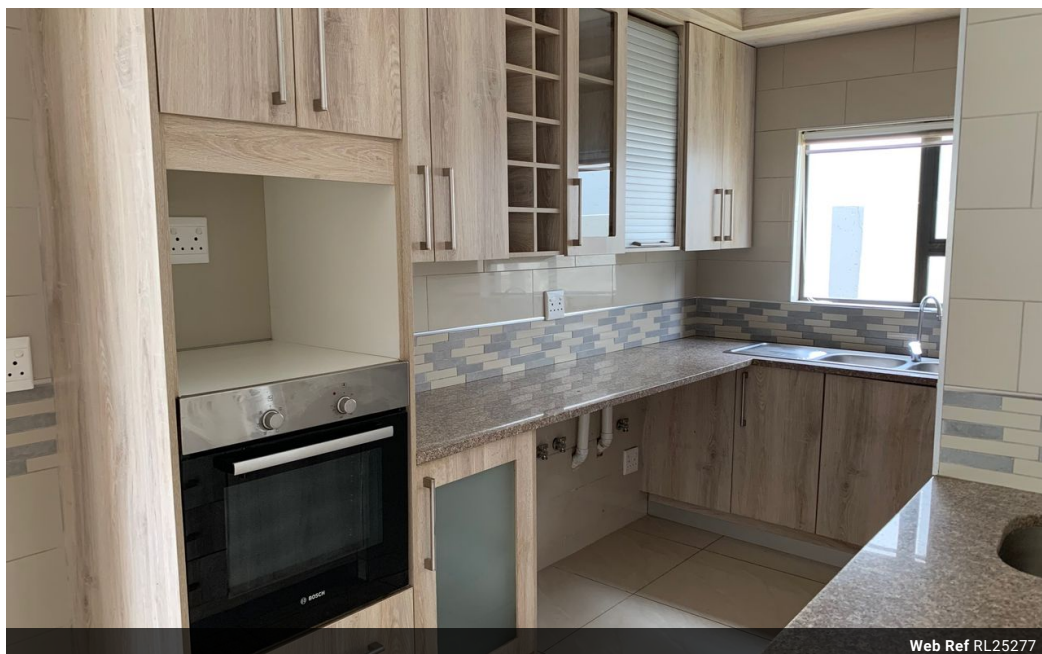
schalk@threepercent.com

Contact Pretoria East

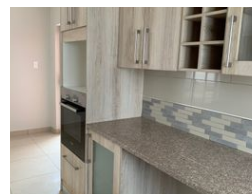
083 3208084

1st Floor, 59 Regency Drive, Route 21
Corporate Park, Irene, 0174

3 Bedroom Sectional Title For Sale in Heron Hill Garden Estate



Web Ref RL25277



R2,295,000

🛏 3 🚿 2.5 🏠 2

Monthly Bond Repayment R23,299.50

Calculated over 20 years at 10.75% with no deposit.

Transfer Costs R97,838.00 **Bond Costs** R36,530.00

These calculations are only a guide. Please ask your conveyancer for exact calculations.

Monthly Levy R1,125 **Monthly Rates** R1,800

Beautiful, Modern and ready to move in!!

Experience luxurious estate living at its finest with this beautifully designed 3-bedroom double-storey home, situated in a sought-after Olympus Estate. Boasting sophisticated finishes, spacious interiors, and seamless indoor-outdoor living, this property is the perfect blend of comfort and functionality for modern family life.

As you enter, you're welcomed by a spacious open-plan dining / living area, creating an elegant yet cozy atmosphere for family gatherings or entertaining guests. The entire property is tastefully tiled, adding a refined touch throughout.

A Kitchen Designed for Culinary Delight

The heart of the home is the well-appointed kitchen, featuring a beautiful countertop stove, electric oven, extractor fan, and ample wraparound cupboard space. Whether you're preparing a simple family dinner or hosting a gourmet...

Features

Pets Allowed		Yes			
Interior				Exterior	
Bedrooms	3			Garages	2
Bathrooms	2.5			Carports / Parkings	2
Kitchens	1			Security	Yes
Recep. Rooms	2			Pool	Yes
Studies	1			Views	False
Furnished	No			Sizes	
				Floor Size	207m²

