



Clarel van Vuuren
082 652 8123
clarelv@threepercent.com



Schalk van Wyk
083 320 8084

schalk@threepercent.com

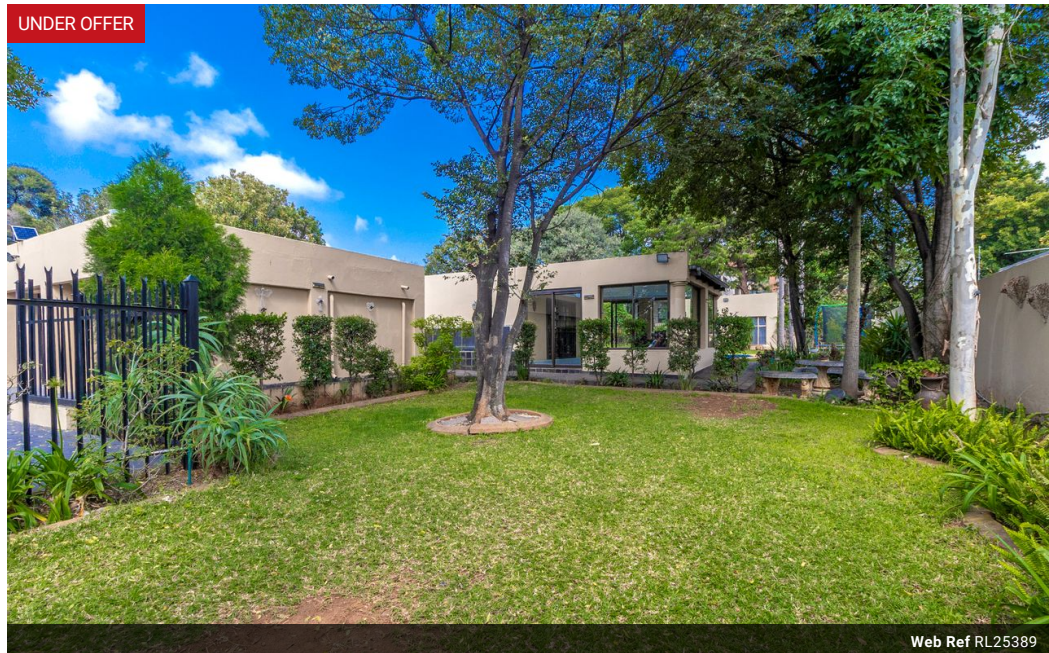
Contact Pretoria East

083 3208084

1st Floor, 59 Regency Drive, Route 21
Corporate Park, Irene, 0174

5 Bedroom House For Sale in Lynnwood Ridge

UNDER OFFER



Web Ref RL25389



R2,790,000

Monthly Bond Repayment R27,854.80

Calculated over 20 years at 10.5% with no deposit.

Transfer Costs R141,228.00 **Bond Costs** R40,300.00

These calculations are only a guide. Please ask your conveyancer for exact calculations.

🛏 5 🚿 2 🏠 3

Spacious Family Home with Cottage in Lynnwood Ridge – The Perfect Blend of Comfort & Convenience!

Situated in the highly sought-after, boomed-off area of Lynnwood Ridge, Pretoria East, this stunning family home offers the perfect combination of space, modern living, and versatility. With 4/5 (or 4 and a study) spacious bedrooms, a separate two-bedroom flatlet and additional domestic quarters, this property is designed to accommodate families who value both privacy and shared living spaces.

Upon entering, you are welcomed into a beautifully designed open-plan lounge and dining area that exudes warmth and sophistication. This space seamlessly flows into a second informal lounge, which offers direct access to the swimming pool and landscaped garden, creating a perfect setting for indoor-outdoor living. Whether you are hosting guests or simply unwinding with family, this home provides a relaxed and inviting atmosphere.

The...

Features

Pets Allowed	Yes		
Interior		Exterior	
Bedrooms	5	Garages	3
Bathrooms	2	Carports / Parkings	6
Kitchens	1	Security	Yes
Recep. Rooms	4	Dom. Accom.	1
Studies	1	Pool	Yes
Furnished	No	Views	False
		Sizes	
		Floor Size	376m ²
		Land Size	1,487m ²

