



**Nicolene Bierman**  
082 892 0724  
nicolene@threepercent.com



**Schalk van Wyk**  
083 320 8084

schalk@threepercent.com

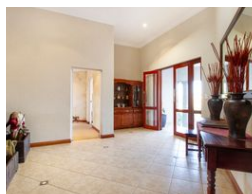
Contact Pretoria East

083 3208084

1st Floor, 59 Regency Drive, Route 21  
Corporate Park, Irene, 0174



Web Ref 4894429



**R7,950,000**

5 4.5 4

**Monthly Bond Repayment** R82,058.98

Calculated over 20 years at 11% with no deposit.

**Transfer Costs** R743,728.00 **Bond Costs** R75,285.00

These calculations are only a guide. Please ask your conveyancer for exact calculations.

**Monthly Levy** R3,998 **Monthly Rates** R4,698

### 5 Bedroom with Study home for sale in Mooikloof Equestrian Estate

Discover the epitome of indoor/outdoor living for your family's enjoyment in this stunning home. Upon entering, you're greeted by spaciousness and serenity.

This entertainer's dream boasts a vast covered patio with a built-in braai, overlooking the sparkling pool, seamlessly blending into the open-plan living area featuring a bar, dining room, living room, and kitchen.

The kitchen, adorned with granite tops, offers ample cupboard and counter space, a pantry, and a scullery with room for all your appliances, ensuring your culinary needs are met.

Downstairs, you'll find four generously-sized bedrooms, one of which boasts its own full en-suite bathroom, perfect for accommodating family and friends overnight. The remaining three bedrooms share two additional bathrooms.

Upstairs awaits your sanctuary after a long day. The...

### Features

**Pets Allowed** Yes

#### Interior

Bedrooms	5
Bathrooms	4.5
Kitchens	1
Recep. Rooms	4
Studies	1
Furnished	No

#### Exterior

Garages	4
Carports / Parkings	4
Security	Yes
Dom. Accom.	1
Pool	Yes
Views	False

#### Sizes

Floor Size	943m <sup>2</sup>
Land Size	10,000m <sup>2</sup>