



Nicolene Bierman
082 892 0724
nicolene@threepercent.com



Schalk van Wyk
083 320 8084

schalk@threepercent.com

Contact Pretoria East

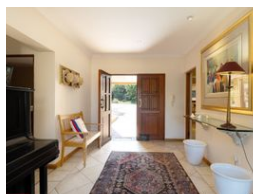
083 3208084

1st Floor, 59 Regency Drive, Route 21
Corporate Park, Irene, 0174

5 Bedroom House For Sale in Mooikloof Equestrian Estate



Web Ref RL24853



R6,700,000

🛏 5 🛁 3.5 🚗 3

Monthly Bond Repayment R66,891.45

Calculated over 20 years at 10.5% with no deposit.

Transfer Costs R600,970.00 **Bond Costs** R70,535.00

These calculations are only a guide. Please ask your conveyancer for exact calculations.

Monthly Levy R4,590 **Monthly Rates** R5,000

Stunning 5-Bedroom Home with Spectacular Views in Sought-After Mooikloof Equestrian Estate

Welcome to this sun-drenched entertainer's haven, offering breathtaking views over the rolling hills of Zwavelpoort.

As you step through the front door, you are immediately captivated by the spectacular vista. The expansive entertainment area boasts a built-in bar, a snooker table, a private lounge, and a dining room that seamlessly flows onto a covered patio. Here, you can relax by the sparkling pool, enjoy the well-established garden, and entertain family and friends while soaking in the panoramic views and the soothing sounds of birdsong.

For those who love to cook, the kitchen is a true delight. It features light oak cabinetry with granite countertops, an electric stove and oven, a central island with a rinse bowl, and a separate scullery with ample space for all your appliances. The kitchen is conveniently positioned for...

Features

Pets Allowed Yes

Interior

Bedrooms	5
Bathrooms	3.5
Kitchens	1
Recep. Rooms	4
Studies	1
Furnished	No

Exterior

Garages	3
Carports / Parkings	3
Security	Yes
Dom. Accom.	1
Pool	Yes
Views	True

Sizes

Floor Size	567m ²
Land Size	13,018m ²

