



**Karine Leboucher Lesar**  
0729474185  
karine@threepercent.com



**Schalk van Wyk**  
083 320 8084

schalk@threepercent.com

Contact Pretoria East

083 3208084

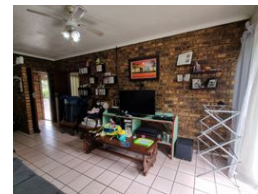
1st Floor, 59 Regency Drive, Route 21  
Corporate Park, Irene, 0174

## 3 Bedroom Freestanding For Sale in Mountain View



SOLE MANDATE

Web Ref RL25470



# R945,000

3 1.5 1

**Monthly Bond Repayment** R9,754.18

Calculated over 20 years at 11% with no deposit.

**Transfer Costs** R30,412.00 **Bond Costs** R23,335.00

These calculations are only a guide. Please ask your conveyancer for exact calculations.

**Monthly Rates** R625.3

## Charming 3-Bedroom versatile Home For Sale in Mountain View

Charming 3-Bedroom Home with Garden and Versatile Space

Welcome to this cozy and inviting 3-bedroom home, ideal for families, work-from-home professionals, or anyone looking for a comfortable living space with room to grow.

The house features three medium-sized bedrooms, all equipped with built-in cupboards for convenient storage. One of the bedrooms is currently used as a home office, complete with its own separate entrance, making it perfect for client visits or a quiet work space – yet still accessible from inside the house if preferred.

Step into the welcoming lounge, a great spot to unwind, watch your favorite shows, or spend quality time with family. The lounge flows out onto a lovely, manicured garden – a great space for kids to kick a ball around, a couple of dogs to roam, or just to relax outdoors.

The kitchen is...

## Features

**Pets Allowed** Yes

### Interior

Bedrooms	3
Bathrooms	1.5
Kitchens	1
Recep. Rooms	2
Furnished	No

### Exterior

Garages	1
Carports / Parkings	3
Security	Yes
Pool	No
Views	False

### Sizes

Floor Size	118m <sup>2</sup>
Land Size	1,279m <sup>2</sup>

