



Clarel van Vuuren
082 652 8123
clarelv@threepercent.com



Schalk van Wyk
083 320 8084

schalk@threepercent.com

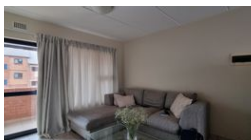
Contact Pretoria East

083 3208084

1st Floor, 59 Regency Drive, Route 21
Corporate Park, Irene, 0174



Web Ref RL22108



R820,000

🛏 2 🚿 1

Monthly Bond Repayment R8,186.72

Calculated over 20 years at 10.5% with no deposit.

Transfer Costs R28,334.00 **Bond Costs** R21,450.00

These calculations are only a guide. Please ask your conveyancer for exact calculations.

Monthly Levy R915 **Monthly Rates** R400

Ideal Investment and the perfect lock-up and go....

This lovely lock-up and go unit is conveniently situated in Pretoria East, close to amenities, several schools, medical facilities and Highways and offers 24 hour access control security. On entering this unit, you get a welcoming feeling with easy flow and maximised space used. The property has a balcony to relax on.

Property features:

- 2 Bedrooms with built-in cupboards
- 1 Bathroom
- Open plan Lounge/TV room
- Kitchen with enough cupboard space
- Balcony
- Carport
- Communal garden

This is a perfect lock-up and go unit.

Please do not hesitate to contact us to arrange a viewing.

Features

Interior

Bedrooms	2
Bathrooms	1
Kitchens	1
Recep. Rooms	1
Furnished	No

Exterior

Carports / Parkings	1
Security	Yes
Pool	No
Views	False

Sizes

Floor Size	54m²
------------	------