



Clarel van Vuuren
082 652 8123
clarelv@threepercent.com



Schalk van Wyk
083 320 8084

schalk@threepercent.com

Contact Pretoria East

083 3208084

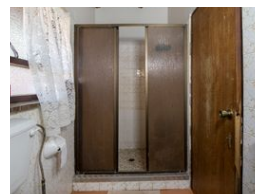
1st Floor, 59 Regency Drive, Route 21
Corporate Park, Irene, 0174

7 Bedroom House For Sale in Waterkloof Park



SOLE MANDATE

Web Ref RL24696



R3,995,000

🛏 7 🛁 4.5

Monthly Bond Repayment R40,558.40

Calculated over 20 years at 10.75% with no deposit.

Transfer Costs R280,500.00 **Bond Costs** R51,610.00

These calculations are only a guide. Please ask your conveyancer for exact calculations.

Monthly Rates R2,236

Endless Opportunity.... Prime location..... Excellent Value!!!

Prime Location, Perfect Price – Your Ideal Home Awaits!

Welcome to your dream low-maintenance family haven that offers the best in comfort and style. This beautifully designed home boasts spacious, open-plan living areas, complete with a cozy fireplace, perfect for creating warm, inviting moments with family and friends.

This charming 7-bedroom house is perfect for those who cherish outdoor living and quality time with loved ones.

Imagine spending sunny afternoons by the sparkling 90 000 L pool with heat pump, hosting braais on the super spacious patio with a built-in braai, and letting the kids explore the lush nearby 2000m2 garden.

Inside, the open living areas seamlessly flow into the outdoor spaces, creating delightful summer retreats where indoor and outdoor living blend effortlessly. This home offers the ideal setting...

Features

Pets Allowed Yes

Interior

Bedrooms	7
Bathrooms	4.5
Kitchens	1
Recep. Rooms	4
Studies	2
Furnished	No

Exterior

Carports / Parkings	7
Security	Yes
Dom. Accom.	1
Pool	Yes
Views	False

Sizes

Floor Size	578m ²
Land Size	1,988m ²

