



**Clarel van Vuuren**  
082 652 8123  
clarelv@threepercent.com



**Schalk van Wyk**  
083 320 8084

schalk@threepercent.com

Contact Pretoria East

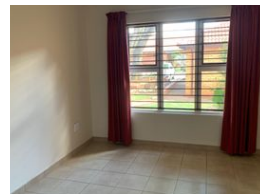
083 3208084

1st Floor, 59 Regency Drive, Route 21  
Corporate Park, Irene, 0174

## 2 Bedroom Retirement Unit For Sale in Willow Park Manor



Web Ref RL24888



**R1,079,000**

2 1

**Monthly Bond Repayment** R10,772.52

Calculated over 20 years at 10.5% with no deposit.

**Transfer Costs** R32,851.00

**Bond Costs** R25,220.00

These calculations are only a guide. Please ask your conveyancer for exact calculations.

**Monthly Levy** R1,850

**Monthly Rates** R850

### Well priced, 2 Bedroom retirement unit for sale

Nestled within a peaceful and well-maintained retirement village, this charming 2-bedroom unit offers the perfect blend of comfort and convenience for those looking to enjoy their golden years.

Step inside to find a spacious open-plan living area leading to a well appointed kitchen with ample built-in cupboards.

The two bedrooms feature built-in cupboards with large windows that invite the tranquillity of the surrounding gardens indoors.

The bathroom is thoughtfully designed for easy accessibility, equipped with a walk-in shower and modern finishes.

This unit also includes a private patio, ideal for enjoying your morning coffee or relaxing with a good book.

Residents of this retirement village enjoy access to a range of amenities, including a communal clubhouse, frail-care facilities, beautifully landscaped gardens and...

### Features

#### Interior

Bedrooms	2
Bathrooms	1
Kitchens	1
Recep. Rooms	2
Furnished	No

#### Exterior

Carports / Parkings	2
Security	Yes
Pool	No
Views	False

#### Sizes

Floor Size	65m²
------------	------

