



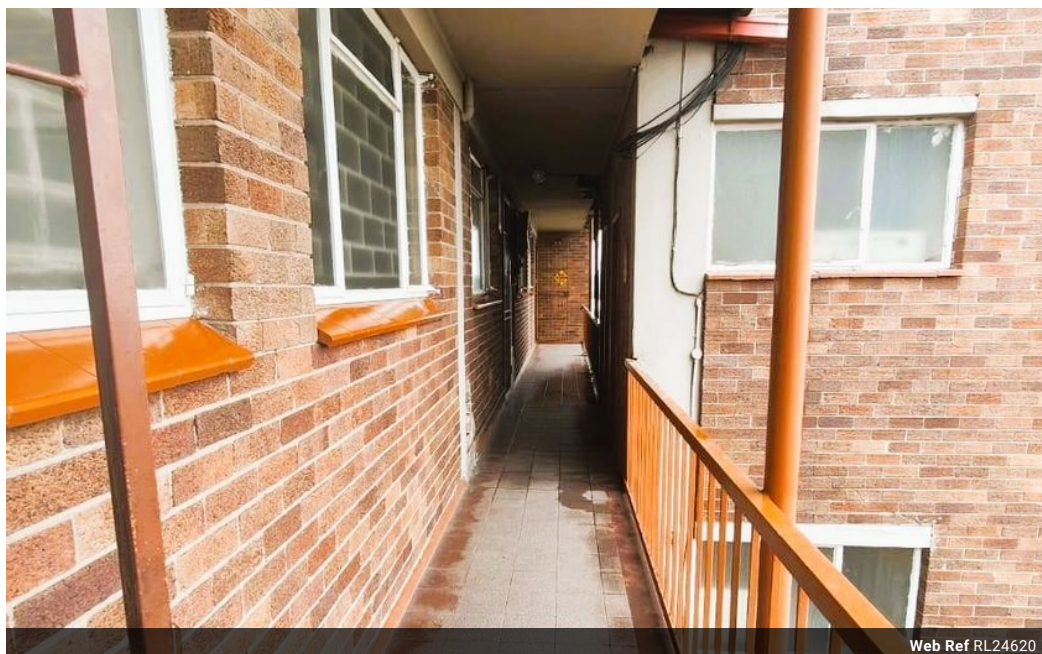
Zelda Da Silva
083 298 1299
zelda@threepercent.com

Contact Parys & surrounds

082 9044728

2904 Ibis Close
Parys Golf Estate

2 Bedroom Apartment For Sale in Sasolburg Central



Web Ref RL24620



R380,000

2 1

Monthly Bond Repayment R3,793.84

Calculated over 20 years at 10.5% with no deposit.

Transfer Costs R16,862.00 **Bond Costs** R11,960.00

These calculations are only a guide. Please ask your conveyancer for exact calculations.

Monthly Levy R1,494 **Monthly Rates** R327

Cosy 2 Bedroom Flat in Sasolburg for sale - close to Town.

Discover the perfect starter home in this charming 2-bedroom apartment located on the 6th floor of a secure complex. Designed for contemporary living, this space features an open-plan dining room and lounge, creating a warm and inviting atmosphere for relaxation and entertaining.

The kitchen is equipped with a stove and ample cupboard space, ideal for meal preparation. Both bedrooms are well-sized, providing a comfortable retreat for you and your partner. The bathroom is conveniently located to serve both bedrooms.

Enjoy the ease of tiled floors throughout, making maintenance a breeze. This apartment also includes a close-up garage for one vehicle, ensuring your car is safely housed.

With its secure setting and modern amenities, this apartment is perfect for a young couple looking to establish their first home. Don't miss...

Features

Interior

Bedrooms	2
Bathrooms	1
Kitchens	1
Recep. Rooms	2
Furnished	No

Exterior

Carports / Parkings	1
Security	Yes
Pool	No
Views	False

Sizes

Floor Size	72m²
Land Size	72m²

