



Zelda Da Silva
083 298 1299
zelda@threepercent.com

Contact Parys & surrounds

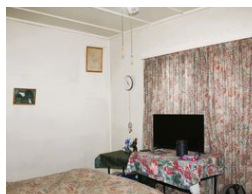
082 9044728

2904 Ibis Close
Pary's Golf Estate

4 Bedroom House For Sale in Sasolburg Ext 1



Web Ref RL26027



R780,000

🛏 4 🚿 1.5 🚗 1

Monthly Bond Repayment R7,787.36

Calculated over 20 years at 10.5% with no deposit.

Transfer Costs R25,877.00 **Bond Costs** R19,565.00

These calculations are only a guide. Please ask your conveyancer for exact calculations.

Monthly Rates R1,000

Spacious 4-Bedroom Home with Large Yard – Sasolburg Ext 1

This well-situated 4-bedroom home in Sasolburg Ext 1 offers great value and loads of potential! Ideally located close to the industrial area and town, it's perfect for families or investors looking for a solid property with room to grow.

Inside, you'll find four carpeted bedrooms, each fitted with ceiling fans and built-in cupboards. The home features a full bathroom with a bath, toilet, and basin, plus an additional separate toilet for added convenience.

The cosy kitchen is equipped with an electric stove and built-in cupboards, leading into a comfortable lounge area. A covered patio at the back of the house overlooks a spacious yard—ideal for kids, pets, or future extensions.

Additional features include:

Single garage and two carports

Domestic room with its own toilet

Prepaid electricity

DSTV connection

Features

Pets Allowed Yes

Interior

Bedrooms	4
Bathrooms	1.5
Kitchens	1
Recep. Rooms	1
Furnished	No

Exterior

Garages	1
Carports / Parkings	2
Security	No
Dom. Accom.	1
Pool	No
Views	False

Sizes

Floor Size	750m²
Land Size	1,190m²

