



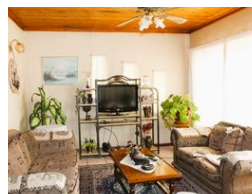
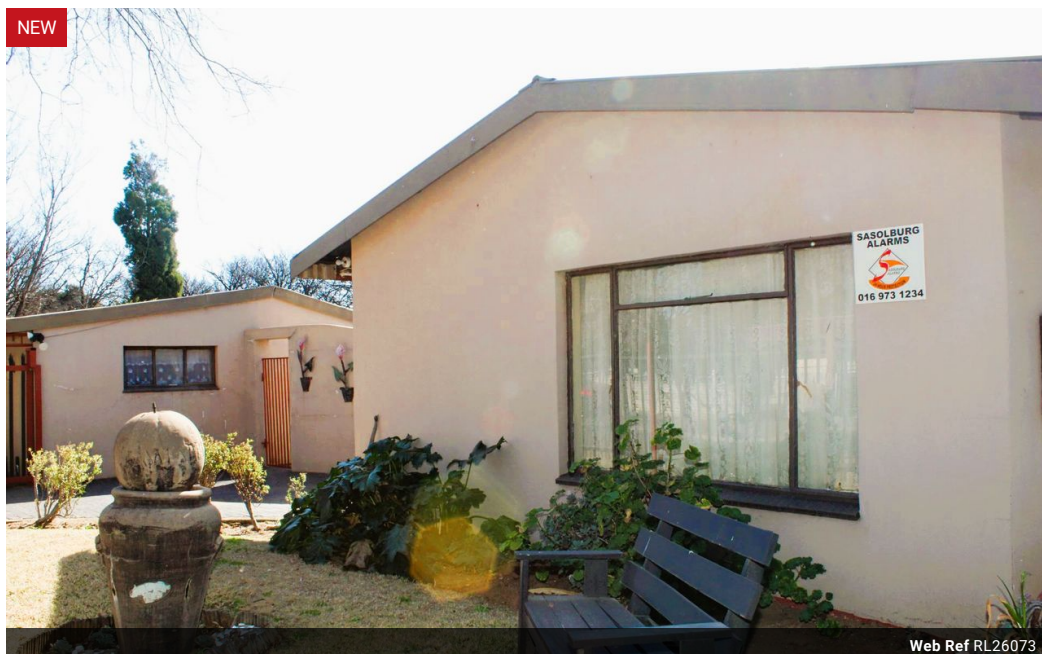
Zelda Da Silva
083 298 1299
zelda@threepercent.com

Contact Parys & surrounds

082 9044728

2904 Ibis Close
Parys Golf Estate

4 Bedroom House For Sale in Sasolburg Ext 12



R900,000

4 2 1

Monthly Bond Repayment R8,985.42

Calculated over 20 years at 10.5% with no deposit.

Transfer Costs R28,334.00 **Bond Costs** R21,450.00

These calculations are only a guide. Please ask your conveyancer for exact calculations.

Monthly Rates R600

Spacious 4-Bedroom Family Home for Sale in Sasolburg

Welcome to this well-maintained and inviting 4-bedroom home, perfect for comfortable family living, situated close to town. Each bedroom is fitted with built-in cupboards, with the main bedroom offering a private en-suite bathroom and walk in closet. A separate guest bathroom ensures convenience for family and visitors alike.

The home features a welcoming entrance hall leading into a spacious lounge and dining area — ideal for entertaining or relaxing with loved ones. Beautiful tiled floors throughout create a modern, low-maintenance finish, while a charming fireplace adds warmth and coziness during the winter months.

Fibre connection and Wendy hut for storage.

This property blends comfort, style, and practicality, making it the perfect choice for your next home.

With a little personal touch, such as a fresh coat of...

Features

Pets Allowed		Yes			
Interior		Exterior		Sizes	
Bedrooms	4	Garages	1	Floor Size	690m²
Bathrooms	2	Carports / Parkings	1	Land Size	773m²
Kitchens	1	Security	Yes		
Recep. Rooms	2	Dom. Accom.	1		
Furnished	No	Pool	No		
		Views	False		

