



Zelda Da Silva  
083 298 1299  
zelda@threepercent.com

Contact Parys & surrounds

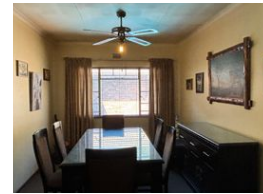
082 9044728

2904 Ibis Close  
Parys Golf Estate

## 3 Bedroom House For Sale in Vaalpark



Web Ref RL23555



**R1,095,000**



**Monthly Bond Repayment** R11,302.46  
Calculated over 20 years at 11% with no deposit.

**Transfer Costs** R32,749.00    **Bond Costs** R25,220.00

These calculations are only a guide. Please ask your conveyancer for exact calculations.

**Monthly Rates** R1,100

### 3 Bedroom house for sale in Vaalpark

REDUCED !!!

Welcome to your dream home in the heart of Vaalpark, Sasolburg. This stunning 3-bedroom house offers the perfect blend of comfort, convenience, and style, making it an ideal choice for discerning buyers.

Situated on a spacious 864-square-meter stand, this property boasts a beautifully manicured garden, providing a tranquil oasis for relaxation and enjoyment. The exterior features low maintenance facebrick walls, complemented by burglar bars and an alarm system, ensuring both security and peace of mind for you and your loved ones.

Step inside to discover a spacious interior designed for modern living. The kitchen is a chef's delight, complete with a breakfast nook and plenty of built-in cupboards for storage. A prepaid meter is installed for added convenience and control over your electricity usage.

Entertainment...

### Features

**Pets Allowed** Yes

#### Interior

Bedrooms	3
Bathrooms	2
Kitchens	1
Recep. Rooms	2
Studies	1
Furnished	No

#### Exterior

Garages	1
Carports / Parkings	1
Security	Yes
Pool	Yes
Views	False

#### Sizes

Floor Size	864m <sup>2</sup>
Land Size	864m <sup>2</sup>

#### Extras

Flat Roof Alarm System Breakfast Nook Carport Fibre