



Zelda Da Silva
083 298 1299
zelda@threepercent.com

Contact Parys & surrounds

082 9044728

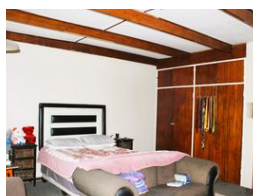
2904 Ibis Close
Pary's Golf Estate

3 Bedroom Freestanding For Sale in Nanescol



SOLE MANDATE

Web Ref RL23549



R500,000

3 1 2

Monthly Bond Repayment R5,076.14

Calculated over 20 years at 10.75% with no deposit.

Transfer Costs R19,049.00 **Bond Costs** R13,910.00

These calculations are only a guide. Please ask your conveyancer for exact calculations.

Monthly Rates R990

Big Plot for sale in Nanescol, Vanderbijlpark

SOLE MANDATE:

BACK ON THE MARKET!

PLEASE NOTE: Seller (residing in Australia) is selling the property at an undervalued price - as he wants the potential buyer to handle the eviction process of the current tenant.

VOETSTOOTS.

Discover the epitome of country living with this magnificent 3-bedroom plot nestled in the serene surroundings of Nanescol, Vanderbijlpark. Spanning an expansive 2.14 hectares, this property offers ample space for both relaxation and potential development.

As you step inside, you'll be greeted by a spacious interior adorned with tiled and carpeted floors, creating a warm and inviting atmosphere. The heart of the home boasts a generous kitchen complemented by a lounge and TV room, providing the perfect setting for gatherings with family and friends.

The three bedrooms are thoughtfully designed with

Features

Pets Allowed		Yes			
Interior				Sizes	
Bedrooms	3			Floor Size	1,500m ²
Bathrooms	1			Land Size	2,100m ²
Kitchens	1				
Recep. Rooms	2				
Furnished	No				
Exterior					
Garages	2				
Carports / Parkings	2				
Security	Yes				
Pool	No				
Views	False				