



Zelda Da Silva
083 298 1299
zelda@threepercent.com

Contact Parys & surrounds

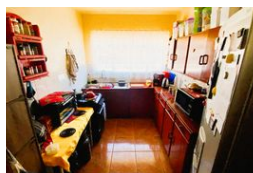
082 9044728

2904 Ibis Close
Parys Golf Estate

2 Bedroom Flat For Sale in Vanderbijlpark CW 1



Web Ref RL25882



R480,000

2 1 1

Monthly Bond Repayment R4,792.22

Calculated over 20 years at 10.5% with no deposit.

Transfer Costs R19,105.00 **Bond Costs** R13,910.00

These calculations are only a guide. Please ask your conveyancer for exact calculations.

Monthly Rates R300 **Sectional Title Levy** R3,000

2-Bedroom Ground Floor Townhouse – Prime Location at a Great Price!

This well-kept and move-in-ready ground floor unit offers a wonderful opportunity for first-time buyers, downsizers, or savvy investors.

Property Highlights:

2 Bedrooms with built-in cupboards

1 Full bathroom (bath and shower)

Neat kitchen with generous cupboard space

Open-plan lounge leading onto a cozy patio

Private garden – pet-friendly (small pets allowed)

Prepaid electricity for convenience

Single garage plus additional parking

Features

Pets Allowed Yes

Interior

Bedrooms	2
Bathrooms	1
Kitchens	1
Recep. Rooms	2
Furnished	No

Exterior

Garages	1
Security	Yes
Pool	No
Views	False

Sizes

Floor Size	250m ²
Land Size	257m ²

