



Zelda Da Silva
083 298 1299
zelda@threepercent.com

Contact Parys & surrounds

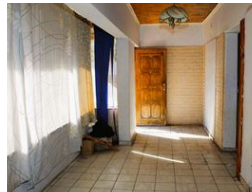
082 9044728

2904 Ibis Close
Parys Golf Estate

3 Bedroom House For Sale in Vanderbijlpark SE 1



Web Ref RL25850



R730,000

🛏 3 🚿 1.5 🚗 2

Monthly Bond Repayment R7,411.17

Calculated over 20 years at 10.75% with no deposit.

Transfer Costs R25,898.00 **Bond Costs** R19,565.00

These calculations are only a guide. Please ask your conveyancer for exact calculations.

Monthly Rates R1,500

Fixer-Upper with Flatlet For Sale in Vanderbijlpark SE 1 – Prime Location Near Primary School!

This 3-bedroom home offers a fantastic opportunity for investors, renovators, or first-time buyers looking to add value and make it their own. Ideally situated close to a local primary school in a sought-after neighborhood.

Main House Features:

3 Bedrooms with built-in cupboards

Tiled flooring throughout

Open-plan TV room and lounge with a cozy fireplace

Spacious entrance hall with large windows – perfect as a second lounge or sunroom

Kitchen with potential – ready for your personal touch and leads to a separate dining room

Full bathroom plus an additional separate toilet

Features

Pets Allowed Yes

Interior

Bedrooms	3
Bathrooms	1.5
Kitchens	1
Recep. Rooms	3
Furnished	No

Exterior

Garages	2
Carports / Parkings	2
Security	No
Pool	No
Views	False

Sizes

Floor Size	750m²
Land Size	872m²

