



Zelda Da Silva
083 298 1299
zelda@threepercent.com

Contact Parys & surrounds

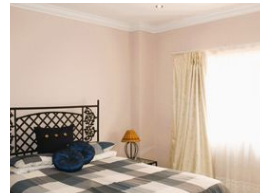
082 9044728

2904 Ibis Close
Parys Golf Estate

5 Bedroom House For Sale in Lochvaal



Web Ref RL24445



R3,980,000

🛏 5 🚿 3 🚗 2

Monthly Bond Repayment R40,406.11

Calculated over 20 years at 10.75% with no deposit.

Transfer Costs R278,850.00 **Bond Costs** R51,610.00

These calculations are only a guide. Please ask your conveyancer for exact calculations.

Monthly Levy R5,000 **Monthly Rates** R3,600

Spacious 5-Bedroom Family Home in Lochvaal

Welcome to your new haven in Lochvaal! This charming 5-bedroom, 3-bathroom home offers both comfort and elegance in a secure, tranquil complex. Located just 100 meters from the river, you can enjoy serene river views and the gentle sounds of nature from the comfort of your own home.

Key Features:

Open-Plan Living: The heart of the home boasts a spacious open-plan kitchen, complete with a gas stove, seamlessly connecting to a bright lounge and dining area. An inviting entertaining area is enhanced by a built-in anthracite stove, perfect for cozy gatherings.

Natural Light & Comfort: Enjoy natural light through two skylights and stay cool with two air conditioners. The home also features roof ceilings and newly installed blinds for added comfort and style.

Modern Amenities: Stay connected with Wifi and DSTV connections, and...

Features

Pets Allowed	Yes			
Interior		Exterior		Sizes
Bedrooms	5	Garages	2	Land Size
Bathrooms	3	Carports / Parkings	2	103m²
Kitchens	1	Security	Yes	
Recep. Rooms	2	Pool	Yes	
Furnished	No	Views	True	

