



Annika Liebenberg
082 771 0147
annika@threepercent.com

Contact Parys & surrounds

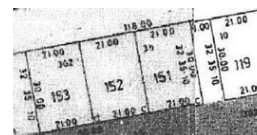
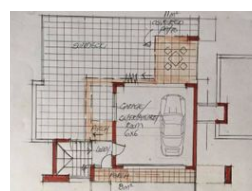
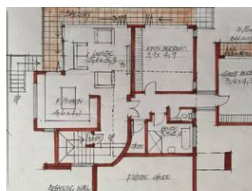
082 9044728

2904 Ibis Close
Parys Golf Estate

630m² Vacant Land For Sale in Vaaloewer



Web Ref RL19583



R280,000

Monthly Bond Repayment R2,842.64

Calculated over 20 years at 10.75% with no deposit.

Transfer Costs R15,517.00 **Bond Costs** R10,985.00

These calculations are only a guide. Please ask your conveyancer for exact calculations.

Monthly Rates R616

Vaaloewer Stand For Sale With Plans

This stand is situated within an access controlled development called Vaaloewer.

It is located approximately 100km from the East Rand, 75km from the West Rand and 25km from the Vaal Mall, Vanderbijlpark.

*It offers a 180 degree view of the Vaal river and neighboring game farm.

* No levies.

* There are no specific timeframe to complete building work.

* Provisional plans has been prepared for client approval.

Call me for a viewing appointment.

Features

